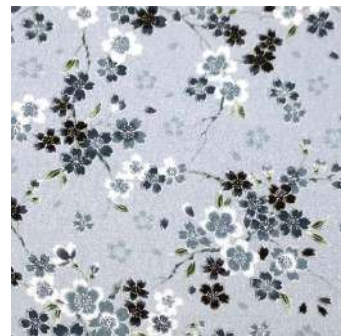


2026 Winter ~ Spring



**COCOLUCK**

Japanese Modern Accessories





<2300>

Shoelace (For 5-6 holes)

Size: Length approx. 46.0 in

Ko-Kiku (Chrysanthemum)

Suzu-Sakura (Cherry blossoms)



101-KK\_BK

105-KK\_WH

106-KK\_NV

121-SS\_BK

122-SS\_RD

124-SS\_YL

125-SS\_PK

Suzu-Sakura (Cherry blossoms) Nadeshiko-Sakura (Cherry blossoms)

Oo-Kiku(Chrysanthemum)

Mai-Sakura (Cherry blossoms)



127-SS\_PL

141-NS\_GR

181-OK\_BR

182-OK\_GY

188-MS\_BK

189-MS\_NV

190-MS\_GY



<2300>  
Shoelace (For 5-6 holes)

Size: Length approx. 46.0 in

Komon



199-KOM\_BB

Ko-Ume (Plum)



202-KU\_PK



203-KU\_RD



204-KU\_PL



205-KU\_WH

Ryusui



211-RYU\_NV



212-RYU\_BW

Yuga



239-Y\_LB

Ichimatsu



251-ICHI\_PK



252-ICHI\_BL

Botan-Ryu (Dragon)



276-BR\_BK



278-BR\_BL

Maru-Kiku (Pinpon Mum)



312-MK\_PK



314-MK\_LB



Display box for HimoColor (Assembly type)

PP craft sneakers for display



Assembly type  
(Right side only)



Strawberry\_NV



Sushi\_WH



NEKOBAN



Akaneko\_RD



Lucky Cat\_JU

<6199> Cat bandana

Size: Neck circumference approx.  
5.5 in - 7.0 in.



Neko & Koban\_NV



Daruma\_WH



Mari & Sakura\_BK



Simple Karakusa\_GR



Kanjineko\_WH



Flower\_PR



SEIGA\_RD



FUJI\_LB



LEMON\_WH



ODEN\_PK



SUSHI\_WH

Display box for NEKOBAN (Assembly type)



<p1715> Origami earrings Crane

Size: Length (not including metal fittings) approx. 2.2 in  
 Material: Crane: Japanese origami paper, Earrings: Stainless Steel

RD / PK



YL / GR



BL / PR



[Note]  
 You cannot specify the pattern.  
 All processes are handmade, there are individual differences.

Display box for Origami earrings Crane  
 (Assembly type)



<p1753> Mizuhiki flower blooming earrings

**NEW**

Size: Length (not including metal fittings) approx. 1.97 in Diameter: Right 0.8 in  
 Material: Flower: Mizuhiki, Earrings: Stainless Steel Left 0.6 in



RD



NV



RD



GO



NV

**[Note]**  
 The artist handcrafted this mizuhiki by combining plum blossoms, which are considered to be auspicious, with ping pong mums. The traditional plum knot has the meaning of "improving one's destiny." and the ping pong mam has the meaning of "a flower that brings happiness."

<p1754> Mizuhiki Nyanko earrings

Size: Length (not including metal fittings) approx. 1.97 in  
 Material: Nyanko: Mizuhiki, Earrings: titanium

Nyanko diameter : 0.6 in



BK



WH



BK



BR



GY



GY

**[Note]**  
 Handmade by the artist using the traditional Japanese culture of Mizuhiki. Mizuhiki is made from paper. So it is very light and puts less strain on the ears. Why not go out with these cute cats?



<1318> Chirimen Mini Clip Ribbon

Size: approx. 1x1.4in

NEW



PK



RD



PR

<1319> Chirimen Mini Clip Flower

Size: diameter 1.2in

NEW



PK



RD



PR

<1438> Wadama mini mini Sakura Clip

Size: wadama diameter 0.48in



PK



PK



PR



BL

<8131> Oval Barrette with Rhinestones

Size: approx. 1.6 in X 4.1 in



BK



RD



NV

<8330> Claw clips large

Size: approx. 1.8 in X 3.4 in



101-KK\_BK



103-KK\_RD



106-KK\_NV



103-KK\_RD

<8337> Mini Mini Claw clips Butterfly

Size: approx. 1.2 in X 1.2 in X 0.8 in



203-KU\_RD



204-KU\_PR



206-KU\_NV



8338

8341

8337

<8338> Claw clips Butterfly with stone

Size: approx. 2.6 in X 2.6 in X 1.2 in



101-KK\_BK



103-KK\_RD



106-KK\_NV



103-KK\_RD

<8341> Claw clips Butterfly\_M

Size: approx. 1.8 in X 1.8 in X 1.6 in



204-KU\_PR



205-KU\_WH



207-KU\_YE

<8326> One side claw clips Camellia

Size: approx. 2.6 in X 2.6 in X 1.2 in



106-KK\_NV



101-KK\_BK



103-KK\_RD



106-KK\_NV

<8322> One side claw clip Crown Cherry blossoms

Size: approx. 1.8 in X 2.9 in X 1.6 in



202-KU\_PI



203-KU\_RD



204-KU\_PR





<8316> Hair rubber bands Camellia

Size: Diameter approx. 1.8 in



101-KK\_BK



103-KK\_RD



106-KK\_NV

<8725> Hair clips Yae-Sakura

Size: approx. 1.0 in X 1.8 in



202-KU\_PI



203-KU\_RD



204-KU\_PL



206-KU\_NV



202-KU\_PI

<8358> Flower Hair pins (Set of 2)

Size: Flower Diameter: approx. 0.8 in, Length: approx. 2.0 in



203-KU\_RD



204-KU\_PL



206-KU\_NV



203-KU\_RD

<8208> Butterfly KANZASHI Hair pin

Size: Length approx. 5.7 in



202-KU\_PK



203-KU\_RD



204-KU\_PL



204-KU\_PL

<8209> Cherry blossoms KANZASHI Hair pin

Size: Length approx. 5.7 in



202-KU\_PK



203-KU\_RD



204-KU\_PL



202-KU\_PK

<1300> CHIRIMEN Beak Hair clip

Size: Length approx. 5.0 in



There are individual differences in the appearance of the pattern.

Ko-Kiku  
(Chrysanthemum)



101-KK\_BK

Ko-Kiku  
(Chrysanthemum)



106-KK\_NV

Suzu-Sakura  
(Cherry blossoms)



121-SS\_BK

Suzu-Sakura  
(Cherry blossoms)



122-SS\_RD

Suzu-Sakura  
(Cherry blossoms)



124-SS\_YL

Nadeshiko-Sakura  
(Cherry blossoms)



141-NS\_GR

Mai-Sakura  
(Cherry blossoms)



188-MS\_BK

Mai-Sakura  
(Cherry blossoms)



189-MS\_NV

Ko-Ume (Plum)



203-KU\_RD

Ko-Ume (Plum)



204-KU\_PL

